

# **SPECIAL KIDS GAZETTE**

## **2022 SUMMER CAMP EDITION**

Inside: Information about Day & Overnight Camps for Kids with Special Needs, Websites & Contact Numbers for Additional Camp Listings and Funding Ideas.



**Hunterdon Healthcare**

Your full circle of care.

**Child Development Center  
Special Child Health Services  
190 Route 31, Suite 500  
Flemington NJ 08822**

**Susan Freedman, MSW, LCSW  
Editor, SCHS Case Manager  
sfreedman@hhsnj.org  
(609) 681-7481 or (908)788-6399**

Hunterdon County Special Child Health Services is funded by the Hunterdon County Commissioners and the Special Child Health Services Program of the New Jersey Department of Health in cooperation with Hunterdon Healthcare's Child Development Center

[www.hunterdonhealthcare.org](http://www.hunterdonhealthcare.org)

**ADDRESS CORRECTION REQUESTED**



The Child Development Center

**A Newsletter produced by Hunterdon County Special Child Health Services  
For Hunterdon County's 0-21 Special Needs Community**

# **SPECIAL KIDS GAZETTE**

## **2022 SUMMER CAMP EDITION**

<b>Pages 2</b>	<b>Finding the right Camp and Paying for It</b>
<b>Pages 3- 4</b>	<b>Summer Programs for Kids with Special Needs in Hunterdon County Area</b>
<b>Pages 4 - 14</b>	<b>More Camps for Kids with Special Needs</b>
<b>Page 13</b>	<b>Finding Pre College Summer Programs &amp; Therapeutic Summer Programs</b>
<b>Page 15</b>	<b>Index of Camps</b>
<b>Page 16</b>	<b>More places to find Camps</b>

**If you are not sure about sending your child to summer camp or have questions about what to ask, what to pack or how to prepare your child and your family, then go to:**



**National Center on Health, Physical Activity, and Disability ([www.nchpad.org](http://www.nchpad.org), Select Articles then *Fun and Leisure*, then *Camp Resources* then *Next Page*.)** Discover Camp is a good resource for parents of children with disabilities who are selecting a camp for their child for the first time. Articles include a “checklist” of questions to ask admissions staff and insight from other parents.



**Kids Health ([www.kidshealth.org](http://www.kidshealth.org), Type ‘camp’ in the search box, click on **Camps**, you will find the following article: **Camps for Kids With Special Needs** which includes topics such as: *Questions to Ask* and *What are the Benefits of Camp*. Also in Spanish.**

---

## **TIPS FOR FINDING THE RIGHT CAMP AND FINDING A WAY TO PAY FOR IT...**

Many of the resources you will use to find the right camp are also connected to resources that provide financial help. Many camps also provide their own financial aid. If you need help paying for summer camp, ask the camp admission staff if they know of any programs that provide funding for *camperships* or money for camp.

### **PerformCare NJ**

or NJ State Funding for Summer Camps for Kids with Developmental Disabilities:

In many cases PerformCare has the ability to provide funding for summer camp for kids who are registered with them as having a developmental or intellectual disability. In some circumstances PerformCare may also fund one to one aides. Funding limits and restrictions apply.

For more information go to **[PerformCareNJ.org](http://PerformCareNJ.org)** or call 1-877-652-7624

---

If your child has a specific diagnosis such as Spina Bifida, Leukemia, Cystic Fibrosis, Asthma or Diabetes ask your specialist’s nurse or social worker, or the local or national chapter of your support organization about funding.

Try 211, or your county helpline, Hunterdon Helpline: 908-735-4357 / 1-800-272-4630.

Ask your child’s child study team Case Manager or Guidance Counselor, they may be aware of summer programs and funding resources.

You can also call your child’s Special Child Health Services (SCHS) Case Manager. SCHS Case Managers may be able to help find funding for camp.

SCHS Hunterdon County call (908) 788-6399 or email [sfreedman@hhsnj.org](mailto:sfreedman@hhsnj.org)  
SCHS Somerset County (908) 725-2366  
SCHS Mercer County (609) 588-8460  
SCHS Middlesex County (732) 745-3100  
SCHS Warren County (908) 475-7960 x7035  
Other Counties call (609) 777-7778

Another great place to contact is The Arc.

Each Arc has a family support unit that may be aware of local resources. Most have their own summer programs.

Try contacting the Arc of New Jersey’s Family Institute [www.arcnj.org](http://www.arcnj.org) (732) 828-2022 or (732) 246-2526

They will also give you the number for your local Arc.

The Arc of Hunterdon County [www.archunterdon.org](http://www.archunterdon.org) (908) 730-7827  
The Arc of Somerset County [www.thearcofsomerset.org](http://www.thearcofsomerset.org) (908) 725-8544  
The Arc of Middlesex County [www.arc-Middlesex.org](http://www.arc-Middlesex.org) (732) 247-8155  
The Arc of Warren County [www.arcwarren.org](http://www.arcwarren.org) (908) 689-7525  
The Arc of Mercer County [www.arcmercer.org](http://www.arcmercer.org) (609) 393-2483

A new place to call is your local **Family Success Center** (counties not listed below go to [www.state.nj.us/dcf/families/support/success/](http://www.state.nj.us/dcf/families/support/success/))

Hunterdon County Harvest Family Success Center 908-237-0465, website [hcfsc.com](http://hcfsc.com)  
Somerset County 908-722-4400  
Warren County 908-213-2674  
Mercer- South Ward 609-695-6275, North Ward 609-393-2980

Please Note: Resources and organizations named in this newsletter are provided for your research purposes only. Information about resources and organizations is taken directly from descriptions offered by them. Special Child Health Services, Hunterdon Medical Center or Hunterdon Healthcare are not liable for any conflicts arising from your use of these resources.

# SUMMER PROGRAMS IN OR CLOSE TO HUNTERDON COUNTY

The presence of a camp on this list in no way implies a recommendation or endorsement. The list is meant for informational purposes only. At the time of printing many camps did not have updated information for Summer 2022. Always confirm information directly with the camp.



## **THE ARC OF SOMERSET COUNTY CAMP JOTONI** [www.thearcofsomerset.org](http://www.thearcofsomerset.org)

Prior years' information: A day & overnight camp for children and adults with intellectual and developmental disabilities. Typically runs until Friday before Labor Day. Before and after care have been available in the past for an extra fee. RN or LPN staffs infirmary. In the past has had a session that runs from 1pm-5pm for campers in extended school programs. Jotoni facilities include a swimming pool, dining hall and five cabins for residential camp. Transportation may be available for some sessions.

Contact: 908-725-8544 or 908-725-7868, 51 Old Stirling Road, Warren, NJ. \*accepts PerformCare funding



## **THE ARC OF WARREN COUNTY CAMP WARREN RECREATION SUMMER PROGRAM**

[www.arcwarren.org](http://www.arcwarren.org) 908-689-7525 x209 2019 information: Camp Warren Day Camp is for ages 5 and up. It operates from the end of June through mid August. Camp features a low camper to staff ratio of 3 to 1. Campers are grouped according to their age and are involved in daily activities which include swimming, music, sports, nature lore, arts and crafts. Transportation provided free of charge within Warren County. Financial aid may be available. [mgubich@arcwarren.org](mailto:mgubich@arcwarren.org). \*accepts PerformCare funding



## **EASTER SEALS CAMP MERRY HEART RESPITE**

[www.easterseals.com/nj/](http://www.easterseals.com/nj/) Camp Merry Heart was not open for summer 2021, check website for updates about 2022. Camp Merry Heart Respite Youth Program is for those ages 6-21. Three overnight sessions in August. Camp Merry Heart Respite also offers a variety of camp and travel programs for ages 18+ as well as a Foster Care and Sibling Reunification. Camp Merry Heart is located in Warren County, NJ. 908-852-3896, [camp@nj.easterseals.com](mailto:camp@nj.easterseals.com).



## **RIDING WITH HEART**

Hunterdon Equine Assisted  
Recreation and Therapy

[www.ridingwithheart.org](http://www.ridingwithheart.org) Pittstown, 908-735-5912

Typically offers week-long summer horseback riding camps, Monday through Friday in July and August. Before and after care may be available. This camp is open to kids with and without special needs. Campers have the opportunity to be involved in the total horse experience. Camp activities include riding lessons, the art and science of good horsemanship, grooming horses, arts and crafts, group activities, and time to play with fellow campers. Summer programs may include: Inclusive Horseback Riding Camp For campers of ALL abilities which brings together children ages 5-16 with and without disabilities, Pony Tales, a literary based horse camp for struggling early readers, Camp 'NEIGH'bor inclusive camp and Super Siblings Camp for sibs of kids with special needs and Social Skills Camp.



**MANE STREAM**  
unbridled possibilities  
For Children and Adults  
with Special Needs

## **MANE STREAM SUMMER DAY CAMP** [www.manestreamnj.org](http://www.manestreamnj.org) (formerly Somerset Hills Handicapped Riding Center)

An inclusive summer day camp for children of ALL abilities where activities are tailored to each camper's individual needs (ages 4 and up). This camp provides an excellent introduction to horses and riding in a safe and secure environment. All campers are paired with trained volunteers. Activities include: daily riding lessons, horsemanship, games, crafts, and more. 83 Old Turnpike Rd, Oldwick, NJ 08858. May be eligible for PerformCare or DDD funding. Contact: Kathy Dermody, phone: 908-439-9636, email: [kathy@manestreamnj.org](mailto:kathy@manestreamnj.org). \*accepts PerformCare funding

# SUMMER PROGRAMS IN OR CLOSE TO HUNTERDON COUNTY



**THE HUNTERDON COUNTY PARKS DEPARTMENT** 908-782-1158

[www.co.hunterdon.nj.us](http://www.co.hunterdon.nj.us) Click on Parks & Recreation. Variety of day camps and programs.



**TO FIND CAMPS RUN BY YMCAS** go to [www.ymca.net](http://www.ymca.net) scroll over *What we do* and click on “*participate in a program*”, then click on “*Camp Programs*” scroll all the way down the page and put in your state or zip code. For the Hunterdon County YMCA go to [hcyma.org](http://hcyma.org). Also see MAC Camp Program which works with Frost Valley YMCA and

Dragonfly Forest at Camp Speers.



**SSBJCC CAMP CHAVERIM** [ssbjcc.org](http://ssbjcc.org)

(SHIMON AND SARA BIRNBAUM JEWISH COMMUNITY CENTER) Click on “*Special Needs*” then “*Camp*” then “*Find Your Camp*” then hover over “*Age Groups*” scroll down and click on “*Chaverim-Special Needs Camp*”. Camp Chaverim is for ages 15 +. Bridgewater, NJ. For more information and to register contact Andy Sun, [asun@ssbjcc.org](mailto:asun@ssbjcc.org) or 908-443-9037.

## MORE CAMPS FOR KIDS WITH SPECIAL NEEDS

The presence of a camp on this list in no way implies a recommendation or endorsement, the list is meant for informational purposes only. Information about resources and organizations is taken directly from descriptions offered by them. At the time of printing, summer 2022 information was not available for many of the camps. Confirm all information directly with individual camps.



**CAMP AKEELA** [campaakeela.com](http://campaakeela.com)

Camp Akeela, “where quirky campers thrive” is a summer camp for social skills. It offers programs for grades 3-12, for kids who have completed 11th or 12th grade, as well as a family camp. Akeela is a small, nurturing community that supports bright and kind boys and girls who are struggling socially. Some campers have an ASD or Asperger’s diagnosis while many others don’t have a formal diagnosis but do best in a more structured and predictable setting. Programs include overnight camp, family camp, life skills and college readiness. Thetford Center, VT Contact: 866-680-4744.

**ARTHUR C. LUF CHILDREN'S BURN CAMP** [www.ctburnsfoundation.org](http://www.ctburnsfoundation.org)



The Arthur C. Luf Children's Burn Camp is the only one of its kind in the Northeast. All children attend free of charge. All expenses for lodging, meals, arts/crafts, activities and programs are paid for by the Foundation. Active and retired firefighters from fire Departments along the East Coast, medical personnel trained in treating burns and burn survivors round out the team of counselors for the children. Youth ages 8-18 from all over the world are welcome. Contact: 203-878-6744, email: [cbcf@burnsfoundation.org](mailto:cbcf@burnsfoundation.org).



**CAROUSEL CONNECTIONS** [www.carouselconnections.com](http://www.carouselconnections.com)

A supportive summer residential environment that promotes further development of “transition-related” skills and independence. Teenagers and young adults with special needs

*(Continued on page 5)*

(Continued from page 4)

undergo vocational training and learn essential self care, communication and community living skills. Programs include: Independent Living Experiences, Community Building, Employment Opportunities and Thinking Ahead Planning. Contact: (215) 948-2527. Located in Philadelphia, PA.



## CAMP CHATTERBOX CHILDREN'S SPECIALIZED HOSPITAL

[csh.recdesk.com](http://csh.recdesk.com) Camp Chatterbox is a therapy camp for nonspeaking or severely speech-impaired children, ages 5-22 (and their families), who use synthesized Augmentative and Alternative Communication (AAC) devices. Sponsored by Children's

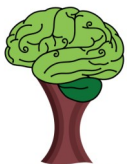
Specialized Hospital. Camp Chatterbox gives children an opportunity to interact with other children using AAC systems while learning to use their devices in functional activities. August 21-27, 2022

Contact 908-301-5548 [campchatterbox@childrens-specialized.org](mailto:campchatterbox@childrens-specialized.org)



## CHILDREN'S SPECIALIZED HOSPITAL

[csh.recdesk.com](http://csh.recdesk.com) Camps include: Pal's Paradise Day Camp, Camp Neveda for kids who are diagnosed with Type I Diabetes (also see Camp Neveda in this newsletter). 908-301-5548 or 1-888-CHILDREN



CAMP CRANIUM  
EMPOWERING CHILDREN WITH BRAIN INJURY

## CAMP CRANIUM [campcranium.org](http://campcranium.org)

A week long overnight camp experience for children who have been diagnosed with an Acquired Brain Injury/Traumatic Brain Injury. Ages 6-18 years old. Camp Cranium is held at Camp Victory, which is a completely handicap accessible recreational facility. Children are matched 1:1 with a counselor for the week of camp. They stay in air conditioned cabins. Every year Camp Cranium plans a week full of fun and activities. Children get to experience climbing a rock wall, going down a zip line, swimming in the pool, participating in a dance night, roasting marshmallows by

the fire while singing camp songs, fishing in the pond, and paddling in the boats. They also participate in theme based activities. All activities are adaptable to all abilities. Also offers a winter ski retreat. Camperships available. Millville, PA. June 12-17, 2022 Contact Lexi Campbell (610) 246-2127 or [campcranium@gmail.com](mailto:campcranium@gmail.com).



## THE DOUBLE H RANCH [www.doublehbranch.org](http://www.doublehbranch.org)

Provides specialized programs and year-round support for children and their families dealing with life-threatening illnesses. Double H Ranch offers residential sessions. Campers are children, age 6-16 during regular session and ages 17-21 during the alumni session. Some camper to staff ratio is 2:1. The camp gives children dealing with critical or life-threatening illnesses the chance to experience the magic of the Adirondacks. The Double H Ranch provides camp experiences that are medically sound, memorable, exciting, fun and empowering. The fully equipped medical facility is staffed 24 hours a day by onsite doctors and nurses. Medical facility allows the camp to provide a physically safe camp experience for all children.

**CAMP INSPIRATION** In the beginning of June, Double H Ranch hosts Camp Inspiration a week long family program for children (ages 5-21 years old) who are BIPAP or ventilator dependent. Camp Inspiration allows campers to participate in typical summer camp activities including swimming, high ropes, arts and crafts, and the chance to participate in a camp dance, talent show and campfire. All programs are FREE. Offers year round programs. Located in Lake Luzerne, NY. Phone 518-696-5676.



## DRAGONFLY FOREST/ CAMP SPEERS YMCA

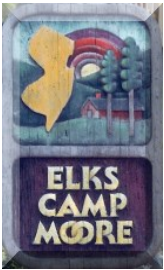
[campspeersymca.org](http://campspeersymca.org) On website for Camp Speers click on “Summer Camp” then on “Dragonfly Forest.” The Dragonfly Forest specialty camp is a traditional overnight program for kids with Autism, 22Q, Asthma, Sickle Cell Disease, and Hemophilia. They aim to make camp a reality for as many families as possible. By partnering with parents and experts in the

medical field, they provide accommodations for campers that allow them to be successful at camp. Dragonfly Forest campers participate in a variety of activities such as archery, nature hikes, swimming, canoeing, tie-dyeing, rock climbing, arts and crafts, and campfires! Activities are tailored to each camper’s needs. **Sessions offered: Explorers Camp (16-24), Autism & 22Q Camp, Teen Leadership Program (ages 15-17), Asthma and Hematology Camp (7-15).** Apply for scholarships online. Dingmans Ferry, Pa, Phone 570-828-2329 [campers@philymca.org](mailto:campers@philymca.org).



## CAMP DUNNABECK AT THE KILDONAN SCHOOL

[www.kildonan.org](http://www.kildonan.org) Camp Dunnabeck accepts average to above-average students ages 8-16 with dyslexia or a language-based learning difference. The camp's outdoor setting, informal atmosphere, and varied recreational program enables students to work hard without feeling that they are being deprived of a summer. Specifically, they concentrate on those activities that develop self-confidence and creativity since failure in school seems to inhibit creativity as well as erode confidence. Program runs from July 2 through August 13, 2022. Also offers online camp. Kent, CT. Contact: [campoffice@kildonon.org](mailto:campoffice@kildonon.org), phone 845-373-8111.



## ELKS CAMP MOORE [www.njelks.org](http://www.njelks.org)

Information from 2018. Camp Moore is in Pompton Lakes but the Elk Lodges in Hunterdon County sponsor local children every summer. The primary goal of Elks Camp Moore is to further develop the recreational and social skills of each child. In a relaxed and accepting atmosphere, each camper experiences new adventures, lasting friendships and opportunities that promote independence and greater self-confidence. Ages 7 to 18 years (as well as young adult week 19-21), ratio of counselors to children is usually 2:1 or 1:1. Elks Camp Moore provides 700-800 camperships each summer.

Nurses on staff. Each child must be sponsored by their local Elks Lodge, with the full cost of attendance paid by the lodge. The children attend at no cost to their families. Parents should contact their nearest Elks Lodge and ask to speak to the Special Needs Children's Chairman. They will help obtain an application for your child. If you experience difficulty in contacting the nearest lodge contact the state office at: **732-326-1300, Clinton Elks 908-735-8531, Flemington Elks 908-782-8759.**



## CAMP FATIMA OF NEW JERSEY [www.campfatimanj.org](http://www.campfatimanj.org)

Information from 2020. A place to meet friends, play games and spend time in the sun, regardless of a disability. For over 50 years, Camp Fatima’s Summer Camp has provided a special place for school age children, offering campers a chance to pick from one of the

week-long sleep away sessions in August. There is no charge for campers to attend Camp Fatima. Each camper is assigned his or her own counselor who provides 24 hour a day individualized care with the help of a team of registered nurses, lifeguards, counselors, administrators, as well as kitchen, arts and crafts, and activities staff. Ages 6-21, adult programs also offered. Contact: [applications@campfatimanj.org](mailto:applications@campfatimanj.org).



## GROWING GREEN [easterseals.com](http://easterseals.com)

Click on *Our Programs* and under *Play* click on *Growing Green*. From 2021: Growing Green is a unique residential summer camp that blends occupational, educational and recreational experiences. Their goal is to teach campers with special needs green occupational skills and an appreciation of outdoor recreational experiences. The primary focus of Growing Green is to teach organic gardening and green landscaping to campers in a designed vegetable and herb garden. Additionally, campers will enjoy other traditional

(Continued on page 7)

(Continued from page 6)

camp experiences with opportunities for inclusion. Campers will learn new skills while they build greater self-esteem, develop new friendships, and improve fitness and nutritional awareness. Also offers an optional career experience track. On site nurse. Ages 10 and up, Growing Green welcomes campers with a wide range of care needs, staffing ratio is 1:3, campers who use wheelchairs need to be able to help with transferring. Growing Green is located at the Pocono Environmental Education Center within the Delaware Water Gap National Recreation Area. Contact: Emily Gonda, [camp@esep.org](mailto:camp@esep.org), 610-289-0114 x209.



## **HAPPINESS IS CAMPING** [happinessiscamping.org](http://happinessiscamping.org)

A free camp for Children who have or who have had cancer and their siblings, ages 6-16, also offers family programs. Camp requires that the child's personal physician determine the child is well enough to attend. The medical staff includes oncology doctors and nurses who provide medical supervision of the highest quality, with facilities for kids requiring chemotherapy, children at risk of bleeding and infection or with significant physical disabilities. Offers Family Camp, College Prep Camp and Summer Counselor Mentorship Program. See website for Summer 2022 dates. Contact: Happiness Is Camping, Attn: Rich Campbell, 62 Sunset Lake Road, Hardwick, NJ 07825. Phone: 908-362-6733 E-mail: [rich@happinessiscamping.org](mailto:rich@happinessiscamping.org).



## **CAMP HAPPY TIMES** [www.thevaleriefund.org](http://www.thevaleriefund.org)

From 2021: The Valerie Fund's Camp Happy Times, is a free one-week overnight camp experience for children ages 5-21 who have or have had cancer (regardless of where they were treated). Over 150 children attend each summer. Camp Happy Times is located at the two hundred acre Tyler Hill Camp in Wayne County, Pennsylvania. Tyler Hill is fully accredited by the American Camping Association and Camp Happy Times is a proud member of the International Children's Oncology Camping Association. Contact: The Valerie Fund; Phone: 973-761-0422.

## **HELEN L. DILLER VACATION HOME FOR BLIND CHILDREN**



[www.dillerblindhome.org](http://www.dillerblindhome.org) A summer vacation retreat for blind and visually impaired children. Located in a residential community two blocks from the ocean, in Avalon, New Jersey. Sessions run June through August and accommodate twenty children ages 7-15 for week-long summer vacations. While attending camp, campers enjoy a variety of activities

including amusement park rides, swimming at the beach, and visiting the boardwalk. All campers participate regardless of the extent of their vision loss, while establishing relationships with other children who may have a similar visual impairment. Having a staff to child ratio of one-to-five, campers must be able to feed, clothe, and bathe themselves with limited assistance, as well as walk up and down stairs. There is no fee for attending this week long camp. Phone (610) 329-6133, see website for application and more information.



## **THE HOLE IN THE WALL GANG CAMP**

[www.holeinthewallgang.org](http://www.holeinthewallgang.org) Summer program serves seriously ill children ages 7-15 with cancer, serious blood diseases (including sickle cell disease, hemophilia, thalassemia, aplastic anemia, etc.), hereditary and acquired immunodeficiency and metabolic diseases, some children with very rare diseases (e.g., primary pulmonary hypertension, FOP) are also included. Family weekend programs include sickle cell, hemophilia, cancer, metabolic disease, serious blood diseases and immunodeficiencies. Offers a sibling program. All

applications are reviewed by the medical team. Decisions are based on the child's inability to attend another camp, the severity of the child's medical problems, whether the child has been to Camp before and other factors. Offers year round programs. Camp located in Ashford, CT, Phone (203) 772-0522.



## **HOPE WITH HEART** [hopewithheart.com](http://hopewithheart.com)

A week long camp for children with moderate to severe heart conditions ages 7-17. Established as a summer camp experience, Hope With Heart provides year round support and friendships for its campers. The camp is unique because it accepts high-risk children. The camp has children with varied heart problems such as valve replacements, pacemakers and transplants. Summer Session August 14-20, 2022. Due date for all COMPLETED applications

is April 30, 2022. Contact: Joanne Geanoules, phone 201-264-6260, [hopewithheartcamp@gmail.com](mailto:hopewithheartcamp@gmail.com) Please go to website to download application and for further information.



## **CAMP HORIZONS** [horizonsct.org](http://horizonsct.org)

Camp Horizons is for campers ages 8 and up (Masters Camp for ages 40+) who are mildly to moderately developmentally disabled and able to be supported fully and effectively within a 1:5 ratio; ambulatory and physically able to participate in an active camping program (the facility is not fully wheelchair accessible) and reasonably proficient in activities of daily living such as eating, toileting, bathing and shaving. No awake 3rd shift provided; campers must sleep through the night. Campers attend three programs in the morning and four in the afternoon. Evening activities provide opportunities for the entire camp to come together for entertainment such as campfires, dances, movies, field games and music. Contact: (860) 456-1032, Windham, CT.

## **CAMP HUNTINGTON** [www.camphuntington.com](http://www.camphuntington.com)



From 2021 Camp Huntington is a co-ed residential program for children and young adults with special learning and developmental needs. Programs are based on a therapeutic programming model formulated from a combination of special education, psychology and behavior analysis. All professionally designed

activities encompass the benefits of participation, recreation and independence. Programming includes social skills training & practical skills development. The highest level of care is enthusiastically provided by a staff of special education and therapy professionals. Staffing levels from 1:1, 1:2 and 1:3+. Three programs are offered for social and life skills development, providing different levels of independence/support. Autism and Asperger's Syndrome, Developmental Disabilities and Learning Disabilities/ADHD. High Falls, NY. Contact: 1-855-707-2267.



## **NEW JERSEY CAMP JAYCEE** [www.campjaycee.org](http://www.campjaycee.org)

An overnight camp for ages 18 and older. New Jersey Camp Jaycee is a collaborative effort between the New Jersey Jaycees and the Arc of New Jersey, with a mission of providing quality camping experiences to persons with developmental disabilities. The goals of Camp Jaycee are centered around developing social skills, improving self-esteem, increasing confidence, learning in a fun environment, developing physical fitness, and establishing meaningful relationships with new friends. The campsite is located in Effort, PA., in the Pocono Mountains. Camp runs June-

August and is best suited to campers who can move freely without restriction. Campers must be: able to self feed, on a regular diet, free of restrictive medical problems, free of serious behavioral problems, have physical stamina for active camp program and have independent toilet skills, 4:1 staff to camper ratio. Contact: (732) 737-8279.





## **CAMP LEE MAR** [www.leemar.com](http://www.leemar.com)

Camp Lee Mar is a private residential camp for children and young adults ages 7–21 with mild to moderate learning and developmental challenges, including but not limited to: developmental disabilities, down syndrome, autism, learning disabilities, Williams Syndrome, Asperger Syndrome, ADD, Prader Willi, and ADHD. Curriculum incorporates a strong academic and speech program with traditional camp activities. A structured environment, individual attention and guidance are emphasized at all times. Staff to camper ratio 3:1. Contact: [ari@leemar.com](mailto:ari@leemar.com), winter phone: 215-658-1708, Lackawaxen, PA.



## **MAC CAMP PROGRAM** [www.yai.org](http://www.yai.org)

Seeing beyond disability.

(on website write camp in the search box). MAC Mainstreaming at Camp works in conjunction with Frost Valley YMCA. MAC campers are between the ages of 8-18. Campers are fully included in all summer camp activities with additional support as needed.

Specially trained counselors provide caring guidance in MAC cabins at a ratio of one staff member for every three campers. Knowledgeable and supportive staff adapt the camp experience to your child's needs and abilities. Contact via website.



## **CAMP MARCELLA** [campmarcella.org](http://campmarcella.org)

2019 Information: Camp Marcella, NJ Camp for Blind Children, Inc., opened its doors in 1947. It has partnered with New Jersey State Commission for the Blind and Visually Impaired (CBVI) and the Lions clubs of NJ to provide an outstanding summer program which has brought campers and staff back year after year. Sessions offered: Challengers, Ages 13-18 for typically developing children who are Blind/Visually Impaired (BVI Session), Adult Camp for ages 18-35.

[registration@CampMarcella.org](mailto:registration@CampMarcella.org). 973-627-1113. Rockaway, NJ.



## **MDA SUMMER CAMP** [mda.org](http://mda.org)

Muscular Dystrophy Association is planning to have camp in 2022. Please see website for Summer Camp updates and a list of camps. Contact: [ResourceCenter@mdausa.org](mailto:ResourceCenter@mdausa.org), 800-572-1717 or [resourcecenter@mdausa.org](mailto:resourcecenter@mdausa.org).



## **CAMP NEJEDA** [www.campnejeda.org](http://www.campnejeda.org)

**(for children with type 1 diabetes) Day and Overnight Camps** (Some information from prior years) The objectives of Camp Nejeda are to provide: an active and safe camping experience for children with diabetes and an opportunity for children to live among their peers and establish close relationships with others who have diabetes. A unique opportunity for diabetes education

management skills. Camp Nejeda also offers Summer Family Camp. Year round programs include: BFF Weekend for campers to bring siblings and best friends, fall weekend programs and more. Overnight camp ages 7-16, day camp ages 6-17. Multiple locations. Email: [info@campnejeda.org](mailto:info@campnejeda.org), Phone (973) 383-2611.



## **NJ CENTER FOR TOURETTE SYNDROME** [njcts.org](http://njcts.org)

**NJCTS Family Retreat Weekend and Tim Howard Leadership Academy.** NJCTS

**Family Retreat Weekend** is held at YMCA Camp Bernie in Hunterdon County. The weekend allows children and their families to meet others with Tourette Syndrome (TS), learn more about their diagnosis, and engage with peer mentors in a fun, safe environment. Kids enjoy activities such as: canoeing, swimming, wall climbing, arts & crafts. Parents join in many activities with their

children but also connect with other parents and share their stories. Powerful workshops provide a safe place for both youth and parents to ask questions about TS and learn from peer mentors. The NJCTS Family Retreat Weekend is popularly known as "the best weekend of the year" to the many families who attend looking for

*(Continued on page 10)*

(Continued from page 9)

camaraderie, a relaxing getaway from the stress of everyday life, and a chance to learn more about TS. June 24-26, 2022. Contact **908-575-7350** or [info@njcts.org](mailto:info@njcts.org). **Tim Howard Leadership Academy** The NJCTS Tim Howard Leadership Academy is a four-day program. Participants work, play, eat and sleep at Rutgers' Busch Campus in Piscataway and enjoy a wide range of activities such as: interacting with doctors, psychologists, and other experts in the field to learn more about Tourette Syndrome, being a part of large and small group discussions with other teens and young adults with TS, participating in a variety of recreational activities, creating a project that can be used for their own advocacy efforts and to help advocate for others and meeting successful young adults who serve as coaches, guiding participants through the weekend's events. August 4-7, 2022. Contact: [admissions@njcts.org](mailto:admissions@njcts.org) or complete application via the website.



## **CAMP NOVA Family Resource Network**

Go to [www.familyresourcenetwork.org](http://www.familyresourcenetwork.org) and type "camp" in the search box.

Camp NOVA is a wonderful opportunity for children and young adults living with epilepsy and other developmental disabilities to enjoy summer camp. Camp NOVA, is an overnight camp for young people ages 12 and up. Individuals participate in group and individual activities and make memories that last a lifetime. Camp activities include acting, arts and crafts, boating, swimming, adaptive ropes courses and more. July 24-30, 2022. Located in Sussex County, NJ. Contact: The Family Resource Network at 732-267-9650, [campnova@epilepsynj.org](mailto:campnova@epilepsynj.org).

## **PALS CAMP PALS** [www.palsprograms.org](http://www.palsprograms.org)

PALS Programs provides a place for young adults with Down syndrome and their peers to have fun, grow as individuals, and build transformative friendships. Each camper is paired with a high school or college aged peer, with this peer, teens and young adults will make many new friends and enjoy many new experiences. Campers will grow more independent and increase their socialization. 2022 PALS summer camp programs: 17 programs throughout the country and a virtual program as well. Cities include: Baltimore, Boston, Chicago, Cleveland, Georgetown, Los Angeles, Maine, NJ, NY, North Carolina, Philadelphia, and west coast cities. Ages vary by venue from 12 and up. Contact via website.



## **PENNSYLVANIA LIONS BEACON LODGE CAMP**

[beaconlodge.com](http://beaconlodge.com) From 2021. Summer camp for children and adults with special needs including blindness, deafness, and many other physical and mental challenges. Offers specialty camps including camps for youth who have ADHD and autism. Co-ed-overnight camp. Multiple summer sessions meet needs of many campers, offers Family Camp. See website for extensive listing of summer programs. Mount Union, PA. Contact: phone 814-542-2511, email: [office@beaconlodge.org](mailto:office@beaconlodge.org).



## **CAMP QUALITY NEW JERSEY** [campqualityusa.org/nj/](http://campqualityusa.org/nj/)

Provides free camping experiences and year-round support programs for children with cancer. This year includes an in person and virtual camp. Campers must be: kids with cancer between the ages of 5-17, by start of summer camp (they can be at any stage of treatment or remission, regardless of physical limitations). Camp Quality New Jersey's programs are focused to care for the emotional needs of children with cancer and their families. Camp is held for one-week during the summer, with additional support programs continuing throughout the year such as reunions, family camp and family outings. Each camper is paired with an adult companion (18 years or older) who spends the entire week by his/her camper's side. The companion is the camper's friend, cheerleader, and mentor even beyond camp. Through year-round events such as holiday parties and family picnics, campers, companions and families come together to share and support one another. Sandystone, NJ. Contact: [newjersey@campqualityusa.org](mailto:newjersey@campqualityusa.org), Kaitlin DeGennaro Wilson, [Kaitlin.wilson@campqualityusa.org](mailto:Kaitlin.wilson@campqualityusa.org), 908-566-6548.



## **CAMP RAMAPO** [ramapoforchildren.org](http://ramapoforchildren.org)

Camp Ramapo is a residential summer camp that serves children ages 6 to 16 who are affected by social, emotional, or learning challenges, including children affected by autism spectrum disorders. Ramapo provides an opportunity for children with a wide range of needs—from nonverbal elementary-age children to teens needing help building essential conflict resolution skills - to experience success. Summer Adventure (ages 6-16). Teen Leadership (ages 14-16). Introductory Week one week session. Rhinebeck, NY. Phone: 845-876-8403 or 212-754-4994.

### **STAFF ASSISTANT EXPERIENCE (SAE) CAMP RAMAPO TRANSITION-TO-INDEPENDENCE**

**PROGRAM FOR YOUNG ADULTS AGES 18-25.** SAE is a residential transition-to-independence program for young adults with social, emotional, or learning challenges such as Asperger's/high-functioning autism/NVLD/PDD, or ADHD. The program offers participants an opportunity to practice vocational and life skills in a communal setting that includes typically developing coworkers and peer role models. SAE is a structured program which offers coaching on life skills (healthy eating habits, physical fitness, organization, time management, meal planning and preparation, budgeting, laundry, hygiene/grooming, housekeeping, etc.), need support and supervision to develop a social network and manage free time. Highly individualized program, off campus volunteering and enrollment in online or community college classes.

Contact via website or 845.876.8403 or 212-754-7003.

## **RISING TREETOPS AT OAKHURST** [risingtreetops.org](http://risingtreetops.org)



Inspiring confidence and joy  
in those with special needs

(formerly Camp Oakhurst) serves children and adults ages 8 and up who have physical and/or developmental disabilities. In past years description of campers welcomed included: disabilities that effect movement, coordination, and stamina, as well as autism spectrum disorders, and include Cerebral Palsy, Muscular Dystrophy, Spina Bifida, Post Polio, Osteogenesis Imperfecta, Traumatic Brain Injury and similar conditions. Children and adults attending summer camp sessions must have a basic level of expressive communication and be able to reside in communal living environments with others. Individuals who use a wheelchair or who require

assistance with activities of daily living are welcome. Most special diets can be accommodated. Full fee per session can be adjusted according to family size and income. Scholarships are available. For children who qualify for state-supported respite services fees may be covered. For further information and to request an application contact 732-531-0215 or 212-533-4020. Email [info@risingtreetops.org](mailto:info@risingtreetops.org). See website to download application. They expect to announce if they will have camp in 2022 around April 1, 2022.

## **ROUND LAKE CAMP YMHA & YWHA** [roundlakecamp.org](http://roundlakecamp.org)



**ROUND LAKE CAMP**

*Exceptional Jewish Camping*

An inclusion program for children ages 7-17 with a wide array of special needs. Round Lake campers are able to integrate into all mainstream activities based on their level of comfort and interest. Facilities and programming are shared with Camp Nah-Jee-Wah and Cedar Lake Camp. Provides comprehensive activities in sports, the arts and the sciences. Program is flexible and individualized such that each camper's interests, needs, goals and supportive services needs can be met. The camp experience is designed to offer campers life skills that lead to success and a feeling of accomplishment, and developed to encourage our campers to be part of a group. Friendship and communication are the cornerstones of every camper's goals. Campers are placed within a compatible cabin group where constant opportunity for self-understanding and friendship is provided. Campers benefit from the support of a high counselor to camper ratio. In particular, the campers have strong support during the unstructured parts of the day, for example, during meals, clean up, rest hour, and shower hour. Camp staff includes occupational therapists, speech therapists and social workers. Dedicated gluten free kitchen. Teen Milford, PA. Contact: Phone: 973-575-3333 x145 email via website.



**CAMP SEQUOIA** [camp-sequoia.com](http://camp-sequoia.com) Camp Sequoia is an overnight summer camp for boys ages 7-17 and girls ages 10-16 to experience social skills success in a dynamic and nurturing environment. Many campers are diagnosed with ADHD. Camp population also includes those who present with social anxiety, learning differences (which affect social skills development), or may not have a formal diagnosis yet present with social learning needs.

Innovative program integrates building Frustration Tolerance with Social Learning theory to help campers develop their social skills through a FUN active, traditional camp program. Located in Pennsburg, PA.

Phone: 610-771-0111 or contact via website.

## SUMMIT CAMP & TRAVEL [summitcamp.com](http://summitcamp.com)



Summit Camp offers 4 programs for youth ages 8 to 23. Summit campers may have any number of diagnoses, but they all share a difficulty making and maintaining age appropriate peer relationships. Clinical diagnoses often fall into one of two categories- ADHD, verbal and non-verbal learning disabilities (NVLD), and oppositional behavioral patterns or disorders, OR, Autism diagnoses (including 'Asperger's', ASD, and PDD-NOS), speech and language disorders, obsessive compulsive disorder, anxiety disorders, and sensory integration issues. Some youngsters may also have issues related to, Tourette's or other tic disorders, or other disorders or injuries that have resulted in neurological differences (stroke, TBI, ABI, fetal alcohol syndrome, etc.).

**SUMMER CAMP:** for youth that have social and emotional learning challenges any age from 8 years to 21 years. Sessions of any length from 1-9 weeks.

**TEEN TRAVEL:** Amazing adventures for teens struggling with social learning skills that are 15-23 years, program is well supported and intricately designed.

**WEEKENDER SOCIAL TRIPS:** Friday to Sunday school year trips for teens that are 13-21 who can benefit from a structured, yet exciting, weekend outing with peers.

**THE CENTER PROGRAM AT SUMMIT** The CENTER Program teaches emerging young adults 18-23 years with significant social learning delays pre-vocational, social, and adaptive life skills as they enter the next phase of their life journey. Contact: [info@summitcamp.com](mailto:info@summitcamp.com) or 570-253-4381.



**The Arc**  
Gloucester



## CAMP SUN 'N FUN

[www.thearcgloucester.org](http://www.thearcgloucester.org)

Camp Sun 'N Fun was founded by The Arc Gloucester in 1962 to offer children and adults with developmental disabilities an opportunity to participate in and enjoy summer recreational activities. Camp is located on over 30 wooded acres and boasts a variety of amenities, including screened, wooded cabins, barrier-free bathrooms and showers, an Olympic-sized, barrier-free swimming pool, nature trail, and an on-site medical facility that is staffed 24 hours a day. Camp Sun 'N Fun provides opportunities to make new friends, develop independence and gain self-esteem. Campers enjoy nature appreciation, arts and crafts, sports and games, music and dance, themed parties and much more.

Contact: via website or 856-629-4502.

## VARIETY CLUB CAMP & DEVELOPMENTAL CENTER [www.varietyphila.org](http://www.varietyphila.org)



For camp information click on *Programs* then *Summer Programs*. Variety's Overnight Camp program is a fun filled educational experience open to children and young adults ages 7-21 with a intellectual and/or physical disability. The Overnight Camp creates an atmosphere of warm acceptance and guidance to encourage participation at whatever level the camper is able. See website to find

out about camp for 2022. Contact 610-584-4366 or via website.

## SUMMER PRE-COLLEGE PROGRAMS FOR STUDENTS WITH DISABILITIES



Pre-college programs are usually held on college campuses in residence halls or as day training, leisure, and recreational activities. The National Youth Transitions Center used to publish a listing of programs, although they haven't updated it since 2014, it may still be a good place to start. You can also find out if colleges that your youth is interested in attending have programs. To access the listing from 2014 go to [health.gwu.edu](http://health.gwu.edu), click on *Resources* then *Repository* then scroll down to on *Summer Pre-College Programs for Students with Disabilities*. The website also has information about grants and scholarships for students with special needs continuing education after high school. These programs provide students who may have challenges some preview of the college experience and may help them manage their first year successfully.



### FOR INFORMATION ON NJ COLLEGE PROGRAMS FOR STUDENTS WITH INTELLECTUAL OR DEVELOPMENTAL DISABILITIES- GO TO THE ARC OF NJ FAMILY INSTITUTE [www.thearcfamilyinstitute.org](http://www.thearcfamilyinstitute.org)

The Arc of NJ's Family Institute's website has a listing of college programs in NJ designed specifically for students with intellectual and developmental disabilities. They also have information on relevant scholarships. In addition they offer student tours of the different college programs offered throughout the state. Go to: [www.thearcfamilyinstitute.org](http://www.thearcfamilyinstitute.org) + Special Campaigns + College Programs or College Tours. Contact 732-828-2022.

---

### OTHER PROVIDERS THAT MAY HAVE SUMMER PROGRAMS

#### Encouraging Kids Family Resource Center

609-848-1400

[encouragingkids.org](http://encouragingkids.org)

\*accepts PerformCare funding also offers respite

#### Hope for All Learners 908-388-5108

[hopeforalllearners.com](http://hopeforalllearners.com)

#### Hop, Skip & a Jump 908-800-4157

[hopskipandjumpintofun.com](http://hopskipandjumpintofun.com)

#### Hybridge Learning Group 855-796-7518 option 1

[hybridgelearning.com](http://hybridgelearning.com)

#### Kid Therapy 908-879-7067

[kidtherapynj.com](http://kidtherapynj.com)

#### Kidz on the Move Pediatric Rehab Center

908-369-3669 [kidzonthemove.org](http://kidzonthemove.org)

#### Limitless Behavioral Services and Consulting

609-503-2544

[llbsac.com](http://llbsac.com)

#### Princeton Speech-Language & Learning Center

609-924-7080

[psllcnj.com](http://psllcnj.com)



# CAMP VICTORY [campvictory.org](http://campvictory.org)


Camp Victory works with “partner groups” that target specific health concerns, conducting a diversity of camps. Camp Victory was built for children who must live with chronic health problems, physical or mental disabilities, or the aftermath of catastrophic illness. Partner groups fund their own camps and set their own fees. No child is turned away for lack of ability to pay. Camp Victory welcomes inquiries from concerned groups interested in operating a camp at their facility. Phone: (570) 458-6530. Camp Victory is in Millville, PA. Listing/ Dates below are for 2022.

 **May 20-22** Camp Courage (Bereavement)  
Susan Smith (570) 204-3746  
[susansmith17846@gmail.com](mailto:susansmith17846@gmail.com)

**May 28-29**  
CampEmerge III (Autism Family Camp)   
[www.campemerge.org](http://www.campemerge.org)  
Jerry Stropnick (570) 275-8904  
[BTEI@aol.com](mailto:BTEI@aol.com)


**June 3-5** Camp Vision  
Blind/Visually Impaired  
Tracy Haas (570) 323-9401 x124  
[tracyh@ncsight.org](mailto:tracyh@ncsight.org)

**June 10-12** Camp Little People (LPA, Inc.)  
(Dwarfism) Eric Knudsen (781) 400-1617  
[eric@harborcamps.org](mailto:eric@harborcamps.org)


**June 12-17**  
Camp Cranium for Children with TBI or stroke  
 [campcranium.org](http://campcranium.org)  
Lexi Campbell (610) 246-2127  
[campcranium@gmail.com](mailto:campcranium@gmail.com)

**June 18-24**  
Keystone Diabetic Kid Camp [kdkc.org](http://kdkc.org)  
Dave Synnamon [thekdkc@gmail.com](mailto:thekdkc@gmail.com)

**June 25-30**  
PA Vent Camp, Contact: Mike Dettorre/Robin Kingston  
(717) 531-5338 [info@paventcamp.org](mailto:info@paventcamp.org)


 **July 2-8** Camp Kydnie (Kidney Disease)  
[www.campkydnie.org](http://www.campkydnie.org)  
Devon Nordine (717) 418-9629  
[campkydnie@gmail.com](mailto:campkydnie@gmail.com)


 **July 9-15** Camp Dost (Cancer)  
[rmhdanville.org/camp-dost/](http://rmhdanville.org/camp-dost/)  
Chris Lehman (570) 214-2889  
[clehman@rmhdanville.com](mailto:clehman@rmhdanville.com)

 **July 16-22** Camp JRA (Arthritis)  
Catie Dailey (267) 261-6642  
[campjra.pa@gmail.com](mailto:campjra.pa@gmail.com)

 **July 23-29** Camp Spifida (Spina Bifida)  
[www.spifida.org](http://www.spifida.org)  
Sasha Hovak (570) 437-3924  
[sashahovak@verizon.net](mailto:sashahovak@verizon.net) [spifida@msn.com](mailto:spifida@msn.com)

**July 29-31**  
Camp Ability (Family Camp w/ Special Needs)  
(570) 416-2704 [campability@yahoo.com](mailto:campability@yahoo.com)

 **July 31-August 5**  
Camp HERO (Deaf & Hard of Hearing)  
David Alianello [gocamphero@gmail.com](mailto:gocamphero@gmail.com)

**July 31-August 5**  
Camp ECHO (Heart Disease)   
Dawn Bressler (570) 784-1290  
[Ruby1275@aol.com](mailto:Ruby1275@aol.com)

 **August 13-19**  
Camp Discover (Skin Disorders)  
Howard Pride (570) 271-8050  
[hpride@geisinger.edu](mailto:hpride@geisinger.edu)

**September 3-4**   
CampEmerge II (Autism Family Camp)  
[campemerge.org](http://campemerge.org)  
Jerry Stropnick (570) 275-8904 [BTEI@aol.com](mailto:BTEI@aol.com)

**September 23-25**  
Camp Spifida Retreat (18+ years old)  
Sasha Hovak (570) 437-3924 [sashahovak@verizon.net](mailto:sashahovak@verizon.net)

 **October 4-6** Camp Courage II (Bereavement)  
Susan Smith (570) 204-3746  
[susansmith17846@gmail.com](mailto:susansmith17846@gmail.com)

October 28-30  
KDKC Teens (Type I Diabetes)  
Dave Synnamon  
[thekdkc@gmail.com](mailto:thekdkc@gmail.com)

## INDEX OF CAMPS BY NAME

Page #		Page #	
13	Pre college programs – where to find	14	JRA, Camp
14	Ability, Camp	14	Kydnie, Camp
4	Akeela, Camp	14	Little People, Camp
4	Arthur C. Luf Children’s Burn Camp	9	Lee Mar, Camp
4	Carousel Connections	8	MAC Mainstreaming
5	Chatterbox, Camp	3	Mane Stream
5	Children’s Specialized Hospital Camps	9	Marcella, Camp
14	Courage, Camp	9	MDA Summer Camp
5 & 14	Cranium, Camp	3	Merry Heart Respite, Camp Easter Seals
14	Discover, Camp	6	Moore, Camp
14	Dost, Camp	9	Nejeda, Camp
5	Double H Ranch, The	9	NJ Ctr for Tourette Synd. Family Retreat Wkd
6	Dragonfly Forest/Camp Speers	10	NOVA, Camp
6	Dunnabeck, Camp	11	Oakhurst, Camp - see Ring Treetops
14	ECHO, Camp	14	PA Vent Camp
6	Elks Camp Moore	10	PALS, Camp
14	Emerge, Camp	10	Pennsylvania Lions Camp Beacon
6	Fatima, Camp	10	Quality, Camp
6	Growing Green	11	Ramapo, Camp
7	Happiness is Camping	3	Riding with HEART
7	Happy Times, Camp	11	Rising Treetops at Oakhurst
7	Helen L. Diller Vacation Home for Blind Children	11	Round Lake Camp
14	HERO, Camp	12	Sequoia, Camp
7	Hole in the Wall, Camp	6	Speers, Camp, Dragonfly Forest
8	Hope with Heart, Camp	14	Spifida, Camp & Spifida Retreat
8	Horizons, Camp - Sleep Away	12	Summit Camp & Travel
4	Hunterdon County Parks Dept.	12	Sun n’ Fun
8	Huntington, Camp	3	Warren, Camp - Arc of Warren
5	Inspiration, Camp, see Double H Ranch	14	Victory, Camp
8	Jaycee, Camp	12	Variety Club Camp
4	JCC Camp Chaverim	14	Vision, Camp
3	Jotoni, Camp	4	YMCA Camps

### THE LIST BELOW MAY HELP YOU FIND AN APPROPRIATE PROGRAM:

**Arthritis**, Camp JRA  
**Asthma** - www.asthmacamps.org  
**Augmentative Communication**- Camp Chatterbox  
**Autism, High Functioning / Asperger’s** – Multiple camps  
**Bereavement**- Camp Courage (2 sessions)  
**Bleeding disorders** – Hole in the Wall, Double H  
**Blind/Visually impaired**- Hellen L. Diller Vacation Home, Camp Marcella, Pennsylvania Lions Beacon Lodge, Camp Vision  
**Brain Injury** -Camp Cranium, Camp TREK (see back cover)  
**Burns**- Arthur C. Luf Children’s Burn Camp  
**Cancer** - Happiness is Camping, Camp Happy Times, Camp Quality, The Hole in the Wall Gang, Camp Dost  
**Cerebral Palsy** –Multiple camps  
**Deaf/Hard of Hearing** - Camp HERO  
**Diabetes** – Camp Nejeda, Keystone Diabetic Kid Camp  
**Down syndrome** - Camp PALS  
**Dyslexia** – Camp Dunnabeck  
**Epilepsy** -Camp NOVA  
**Heart conditions** - Hope With Heart, Camp Echo  
**Immune disorders** - The Hole in the Wall Gang Camp  
**Kidney disease** - Camp Kydnie

**Learning disability** - Camp Dunnabeck, Camp Huntington  
**Little People** -Camp Little People  
**Mainstream** – YAI MAC Camp Program, Summit Camp & Travel  
**Medically fragile** – Double H Ranch, Hole in the Wall Gang  
**Muscular dystrophy** – MDA Summer Camp  
**Physical disabilities** – Elks Camp Moore, Camp Fatima, Growing Green, Rising Treetops at Oakhurst  
**Spina Bifida** - Camp Spifida, Camp Spifida Retreat  
**Tourette Syndrome** - NJ Center for Tourette Syndrome Family Retreat and Tim Howard Leadership Academy, Camp Kinder Ring Free To Be Me, Summit Camp & Travel  
**Transition to Adult Life Programs** - Camp Akeela, Camp Carousel, Going Green, Camp Huntington, Summit Camp, Camp Ramapo, Variety Club  
**Uses Ventilator/Oxygen** - Camp Inspiration at Double H Ranch, PA Vent Camp

# **MORE PLACES TO FIND THE RIGHT SUMMER PROGRAM**

If you don't have internet access, try your local library.  
Ask for assistance at the reference desk or from the youth services librarian.

## **CAMPS FOR CHILDREN WITH CANCER:**

Children's Oncology Camping Association  
[www.cocai.org](http://www.cocai.org)

## **CAMPS FOR KIDS & ADULTS W/ SPINA BIFIDA**

(908) 782-7475 E-mail via website  
[www.thesbrn.org](http://www.thesbrn.org) [spinabifidaassociation.org](http://spinabifidaassociation.org)  
[www.sbawp.org](http://www.sbawp.org)

## **CAMPS FOR CHILDREN WHO ARE DEAF OR HARD OF HEARING**

[gallaudet.edu](http://gallaudet.edu) and type *camp* in the search box  
[Deafcampsinc.org](http://Deafcampsinc.org) [deafchildren.org](http://deafchildren.org)

## **CAMPS FOR KIDS & ADULTS WITH BRAIN INJURY**

1-800-669-4323 Brain Injury Alliance of NJ  
[bianj.org](http://bianj.org) Email: [info@bianj.org](mailto:info@bianj.org)  
Camp TREK for ages 18 +

## **CAMPS FOR AMPUTEES & CHILDREN WITH LIMB DIFFERENCES OR LOSS**

[www.amputee-coalition.org](http://www.amputee-coalition.org) Youth Camp  
1-888-267-5669, email via website  
[www.handstolove.org](http://www.handstolove.org)  
[www.adventureamputeecamp.org](http://www.adventureamputeecamp.org)  
[www.nolimitsfoundation.org](http://www.nolimitsfoundation.org)

## **CAMPS FOR KIDS WITH ADHD & LEARNING DISABILITIES**

[Understood.org](http://Understood.org) type *Camp* in the search box  
[www.ldonline.org](http://www.ldonline.org)  
[www.chadd.org](http://www.chadd.org)

## **CAMPS FOR KIDS WITH AUTISM**

**AUTISM NJ** [www.autismnj.org](http://www.autismnj.org) click on *Find a referral*  
and type camp into the search box  
or call 1-800-4-Autism / 1-800-428-8476

## **CAMPS FOR KIDS WITH CRANIOFACIAL DIFFERENCES**

[www.cleftline.org](http://www.cleftline.org) 919-933-9044  
[www.ccakids.com](http://www.ccakids.com)

**ASTHMA CAMPS** [www.asthmacamps.org](http://www.asthmacamps.org)

## **CHILDREN'S HEMIPLEGIA & STROKE ASSOCIATION (CHASA)**

[www.chasa.org](http://www.chasa.org)  
click on *SPORTS* then on *Summer Camps*

## **CAMPS FOR CHILDREN WITH DIABETES**

[www.diabetescamps.org](http://www.diabetescamps.org)

## **CAMPS FOR KIDS WITH TOURETTE SYNDROME**

NJ Center for Tourette Syndrome (908)-575-7350  
[njcts.org](http://njcts.org) [info@njcts.org](mailto:info@njcts.org)  
Camp Kinder Ring Free To Be Me  
[campkr.com](http://campkr.com) 845-221-2771

## **THERAPEUTIC RIDING** [www.pathintl.org](http://www.pathintl.org)

PATH Professional Association of Therapeutic  
Horsemanship International, Click on *Centers*

## **GENERAL LISTINGS / SEARCH ENGINE SPECIFICALLY FOR KIDS WITH SPECIAL NEEDS: SUMMER CAMPS & PROGRAMS FOR PEOPLE W/ SPECIAL NEEDS** [www.veryspecialcamps.com](http://www.veryspecialcamps.com)

## **MAINSTREAM WEB SITES THAT ALLOW YOU TO SEARCH FOR CAMPS BY SPECIFIC SPECIAL NEEDS:**

American Camp Association (ACA)  
[www.acacamps.org](http://www.acacamps.org)  
*American Camp Association has a great search engine*  
National # 800-428-2267 or 765-342-8456.

[www.mysummercamps.com](http://www.mysummercamps.com)

[www.summercamps.com](http://www.summercamps.com)

[www.kidscamps.com](http://www.kidscamps.com)

## **THE SPECIAL KIDS GAZETTE SUMMER CAMP EDITION 2022**

A Newsletter produced by Hunterdon County Special Child Health Services

For Hunterdon County's 0-21 Special Needs Community

[www.hunterdonhealthcare.org](http://www.hunterdonhealthcare.org)





**Hunterdon Healthcare**

Your full circle of care.

[www.hunterdonhealthcare.org](http://www.hunterdonhealthcare.org)

**Child Development Center  
Special Child Health Services  
190 Route 31, Suite 500  
Flemington NJ 08822**

**Susan Freedman, MSW, LCSW  
Editor, SCHS Case Manager  
sfreedman@hhsnj.org  
(908)788-6399**

Hunterdon County Special Child Health Services is funded by the Hunterdon County Commissioners and the Special Child Health Services Program of the New Jersey Department of Health and Senior Services in cooperation with Hunterdon Healthcare's Child Development Center

**ADDRESS CORRECTION REQUESTED**



The Child Development Center

[www.hunterdonhealthcare.org](http://www.hunterdonhealthcare.org)

**A Newsletter produced by Hunterdon County Special Child Health Services  
For Hunterdon County's 0-21 Special Needs Community**

# **SPECIAL KIDS GAZETTE 2022 SUMMER CAMP EDITION**

<b>Pages 2</b>	<b>Finding the Right Camp and Paying for It</b>
<b>Pages 3- 4</b>	<b>Summer Programs for Kids with Special Needs in Hunterdon County Area</b>
<b>Pages 4 - 14</b>	<b>More Camps for Kids with Special Needs</b>
<b>Page 13</b>	<b>Finding Pre College Summer Programs &amp; therapeutic summer programs</b>
<b>Page 15</b>	<b>Index of Camps</b>
<b>Page 16</b>	<b>More places to find Camps</b>